



Speech Recognition Software through CENMAC



What is Dragon?

Dragon Naturally Speaking is a piece of voice recognition software which enables users to dictate documents, listen to documents, proof read documents through play back, build vocabulary banks and practise spelling and writing skills.

When Dragon is connected to the internet...

The user is able to search the internet, write and read emails and more and send their work to the printer at school or at home.

What other software programmes is Dragon compatible with?

Dragon is compatible with all Microsoft Office programmes including Word, Excel and PowerPoint. Other programmes include paint, Corel Draw and Note Pad.

Can you print and save documents using Dragon?

All documents can be save using normal procedures within Office programmes; once you have saved normally Dragon will bring up a message asking to save to the Dragon profile always [click yes](#). This helps to build the programme and allows the software to become familiar with the way in which the user pronounces the words.

Using Dragon Equipment

Dragon users have the following equipment:

A laptop bag that is marked and named

A personal Laptop, several profiles can be stored on laptop and each one is particular to the individual, enabling the student to have a quiet and a classroom voice file creating better accuracy when used Dragon in different environments. .

A set of headphones with a microphone – with a USB cable

A laptop charger – Laptops should be regularly charged as the software is quite powerful and students carry laptops throughout the day they may need to be plugged in. However this needs to be done with care in a classroom.

The laptops should be charged overnight, this should also help in down loading updates overnight,

Dragon Training

All students and staff have to have training to use the software in an intervention situation before taking it into the classroom this has to include:

- Positioning the microphone
- Making a voice file
- Checking the sound and audio levels of the system for the environment that the laptop is in.
- Understanding and using the commands
- Training on how to use play back for proof reading.
- Train Dragon on specific words that the student finds hard to pronounce and therefore the accuracy of the written words needs to be produced.
- To save the work and be able to use laptop effectively.
- To be able to use Dragon on the internet to support learning.

Training can take students several weeks to feel confident?

Dragon software uses algorithms to work and it takes several hours to build up the confidence to use the software alongside use of the commands. The profile will respond to a person's particular voice patterns and sounds over time improving accuracy. This means that it may take Dragon a while to pick up certain words that a user might want to say, using the command [select that >>>>](#) will improve the accuracy rather than deleting the word.

This can be overcome by:

- Regular practise for various tasks such as reading a chapter from a book out loud getting used to putting in the punctuation.
- Making sure you speak slowly and clearly, separating the sentence from the commands.
- Checking the position of the microphone and recalibrating the microphone when in different environments.
- Practice using the Proof reading, to check for spelling and grammar. This can be in the student's voice or the computer voice.
- Dragon users must playback their work to check it makes sense and check for spelling mistakes it will only dictate what is said or what it thinks has been said.

For extra help...

Contact helen@cenmac.com

LSA

SENCo

When should I be encouraging students to use Dragon?

Dragon can be used for planning, short and extended writing tasks. It should be used as a tool that aids the user in getting thoughts on to paper coherently without the difficulties of writing, spelling and vocabulary becoming a barrier to thinking. It should not replace handwriting skills altogether depending on the student who's using the software.

Therefore it is dependent on task and discussion between teacher, LSA and user when it should be used and where and when.

Using headphones with a microphone

It is vital for volume control that the microphone is positioned just below the mouth.



Due to the microphone used with the software, background noise can conflict with

Setting up...

1. Plug in the headphones,
2. Turn the laptop on.
3. Click the Dragon shortcut symbol on the desk top to wake up the microphone and commands side bar.
4. Select the programme you want to work in for example Word, Power point Excel etc.
5. The indicator that the microphone is working is a symbol in the top left hand side of the screen it will turn from red to green when it is working.

Follow these *progressive simulations*
and you'll learn important skills efficiently!

At any time, you can exit the Tutorial and practice real use,
then return through Dragon's Help menu.



Click the  button to start.

Basic Dragon commands

Dragon has hundreds of commands, there is a side bar that pops up on the right hand side of the screen with these, and the basics are as follows:

“Wake up” - wakes up the microphone

“Go to sleep” - pauses the microphone when somebody else is speaking

“Scratch that” or “Delete” – will delete what has been written

“Full stop” “Comma” and so on.....

“New line” or “New paragraph”

“Highlight” – will highlight text for play back

“Cap that” for capital letters for words in the middle of sentences

Select that for improving spelling drop down box will appear.

Playback

Dragon will play back what you have written or something you want to read in your own voice.

1. Make sure all text is highlighted
2. Select the Audio menu on the top right hand side of the Dragon Bar
3. Scroll down and select Play Back
4. The text will play back in your ears; words can be selected for correction.

Building Vocabulary

New words or key words can be built into a personal vocabulary library for better word recognition during writing tasks.

1. Select the vocabulary Menu from the top right hand side of the Dragon bar
2. Select Spelling from the Menu
3. A box will pop up asking you to say the word and then write it, follow the instructions
4. These words can then be recalled for practice.

The Correction Menu

If Dragon writes something different from what you expected, or you want to modify your text, you can say "correct" immediately followed by the word(s) to replace.

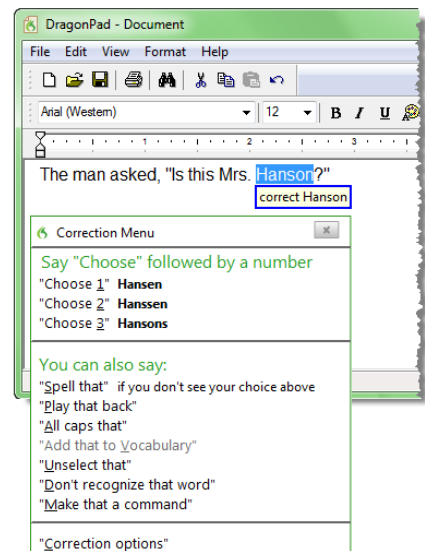
This opens the Correction Menu. One can pick from it or just overwrite it.

Look at the example here:

the menu offers text alternatives

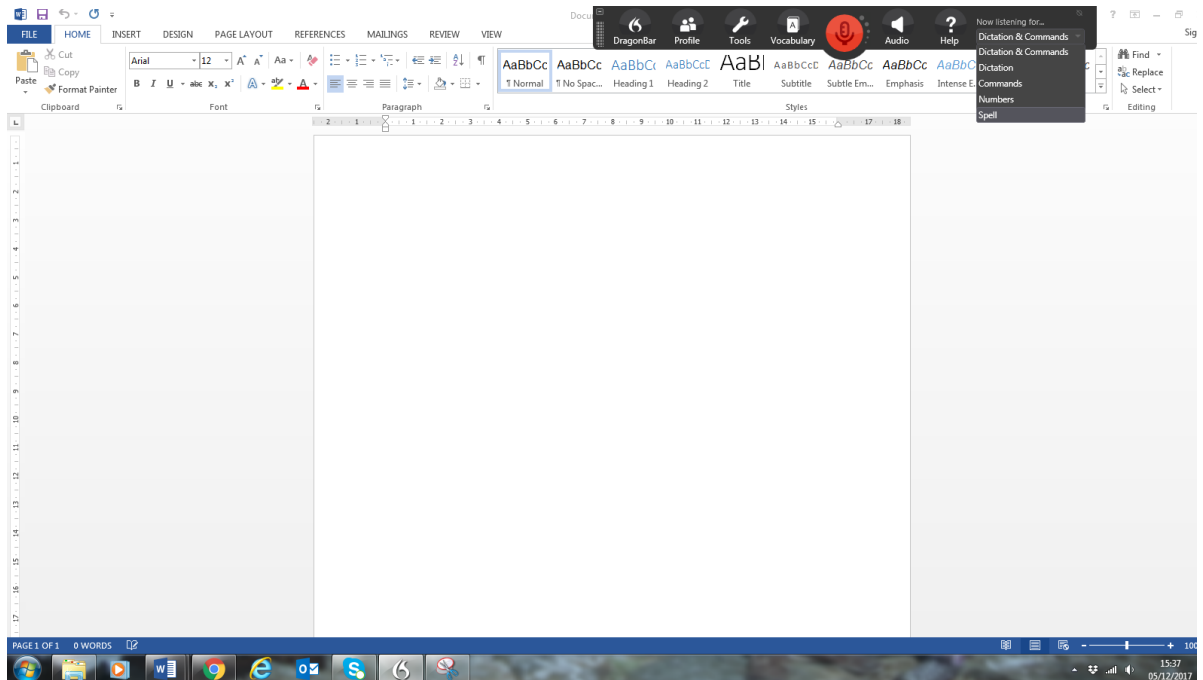
and some commands you could say.

Let's practice. Click >>.



Different formats for Dragon

On the Dragon bar far right side there is a drop down menu that enables you to choose, dictating numbers, spelling words for a test or dictating from a book.



For Further support on Dragon the help button takes you to different areas of the Dragon software.

