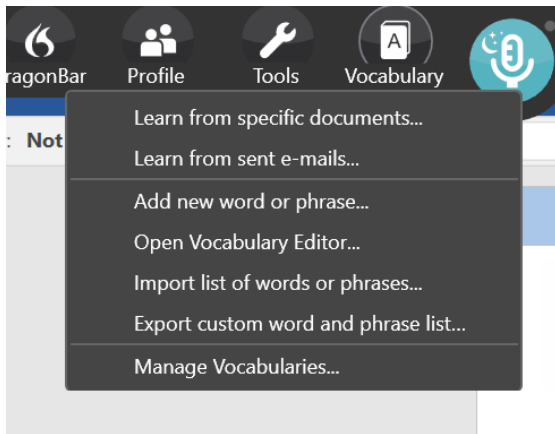


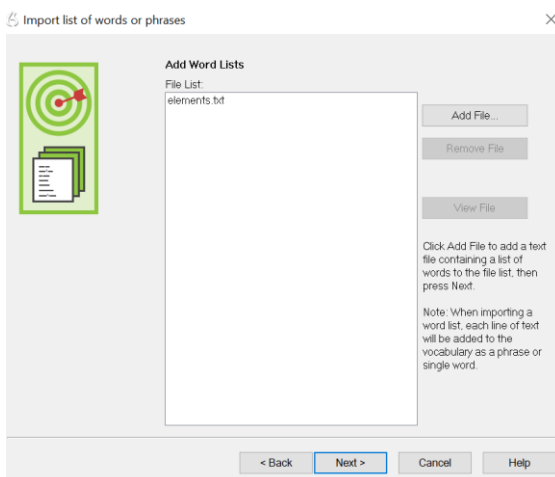
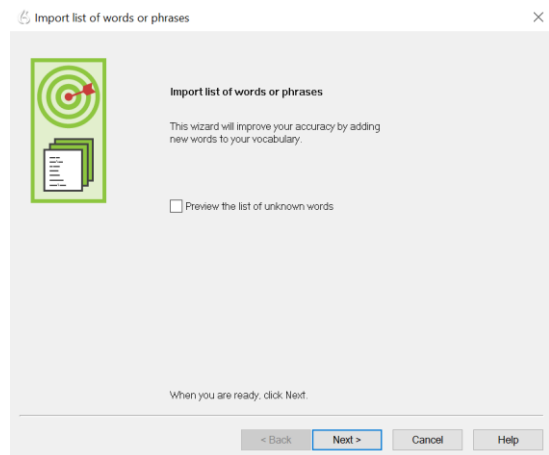


Adding and deleting vocabulary in Dragon.



The Vocabulary tool allows Dragon to learn from documents and emails you already have or learn specific word or phrases.

If you want to import a list of specific words that Dragon finds difficult, (such as scientific vocabulary or foreign words) you can do this by importing a written list. This has to be a .txt file from Notepad, not from Word.



Clicking on Add File moves your list to the vocabulary. It may be that Dragon already contains all or some of these words, in which case it will not need to import them.

